

GREEN MOUNTAIN
WINDOW & DOOR™
COMPANY

News

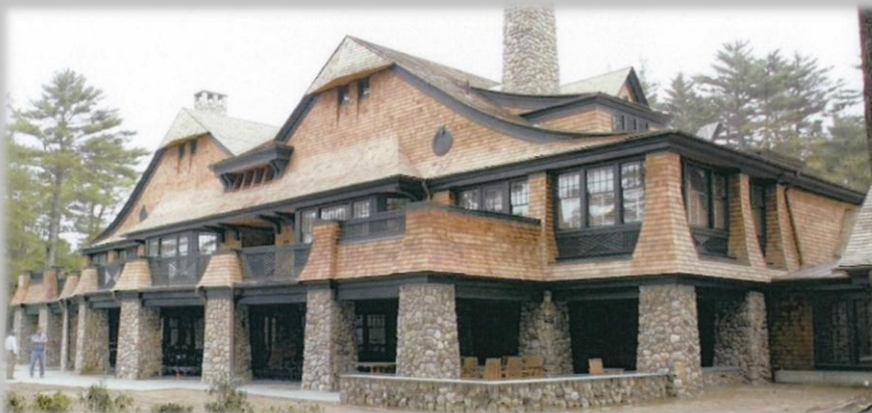
NEW CONSTRUCTION



GREEN MOUNTAIN WINDOW SPECIALIZES IN NEW CONSTRUCTION WINDOW SOLUTIONS FOR BUILDINGS DESIGNED TO MATCH THE NORTHEAST'S UNIQUE ARCHITECTURAL STYLE. OUR WINDOWS ARE DESIGNED TO BLEND THE DETAILS AND PATTERNS ONCE USED BY LOCAL CRAFTSMAN IN NORTHEASTERN SASH MILLS WITH THE LATEST ENERGY PERFORMANCE TECHNOLOGY.

TWO DIFFERENT NEW CONSTRUCTION SYSTEMS:

- MILESTONE SERIES FOR HISTORICAL ACCURACY AND SUPERIOR ENERGY PERFORMANCE
- CLASSIC SERIES FOR BUDGET DRIVEN PROJECTS THAT STILL DEMAND CORRECT WINDOW PROPORTIONS AND GREAT ENERGY EFFICIENCY



We offer two different product lines to fit any budget:



1. Milestone Series Double Hung: This is the most traditional looking double hung window on the market. The sash and frame details are all proportioned to match the historic windows used around the northeast in the 19th and early 20th century. Modern materials such as vinyl and metal are concealed by our exclusive frame design. The sash can tilt in by releasing our hidden release latches. Our hardware options mimic period appropriate design. Options of 5/8", 7/8" or 1 1/4" wide muntins allow you to design to the architectural period of your choice. And our sash is engineered to hide the fact that it holds the most energy efficient glazing available in a narrow glazing pocket; often people don't even realize that it is insulated glass.

2. Milestone Series Casement / Awning: Do you hate the look and operation of modern crank out hardware? Then this window was designed with you in mind. This is a push out system with hardware to hold the sash in any open position. Wide stiles and rails create an old world charm. And a wood framed screen on the interior compliments the traditional design. We offer a concealed friction hinge version and a butt hinge with a sash stay bar version. The window to the right shows the butt hinge / stay bar option on a French Casement (two sash in one frame).



3. Classic Series Double Hung: With this window you won't be sacrificing much to satisfy a more limited budget. The main difference between the Classic and Milestone double hung is the use of exposed vinyl tracks on the sides of the frame to hold the sash in place. These vinyl tracks make the sash a little more difficult to tilt in, are slightly less air tight and are less historic looking than the Milestone system. However, if your windows are painted white the vinyl will blend right in and no one will know that you paid less since all other features and options are the same as the Milestone. Classic window with transom in photo to the left.

4. Classic Series Casement / Awning: This window line has the roto crank hardware, narrow stiles / rails, and aluminum framed interior screen that is commonly found in modern casement and awning windows. However, creative use of our trim packages and muntin options will still make these windows draw attention. To the right is a Classic Series casement with a wood shutter.

