



Green Mountain Window and Door Co.

Green Mountain Door v2.1

Product Information

Unit Specifications	1.2
NFRC & Design Pressure Information	1.3
Measurement Conversions	1.4

Elevations & Sections

General Elevation & Section Overview	1.5
Section Details: Patio Door Cross Sectional	1.6
Section Details: Divided Lite Options	1.7
Elevations: 5/8" Standard Divided Lite Patterns	1.8
Elevations: 7/8" Standard Divided Lite Patterns	1.9

NOTE:

All specifications and data are subject to change without notice.

Allow 1/16" tolerance on all measurements.

Some options and accessories are not covered in this manual. Contact your Green Mountain Representative for further assistance



Green Mountain Window and Door Co.

Unit Specifications

Frame:

- Pine wood interior and exterior standard.
- Frame width: 4 9/16" or 6 9/16"
- Frame thickness: 1 3/16"
- Sill: Anodized Aluminum sill with Oak threshold. Optional: Full wood oak or mahogany sill.
- Pine exterior parts are dipped in a water repellent preservative.

Rails and Stiles:

- Ponderosa Pine wood interior and exterior standard.
- Stile and top rail thickness: 4 1/2"
- Bottom rail thickness: 7 3/8"
- Pine exterior parts are dipped in a water repellent preservative.

Interior and exterior finish:

- Bare wood or white primed standard
- Pre-finished interior and exterior options. See you Green Mountain Window Representative for colors and availability.

Weatherstrip:

- Weatherstrip on top rail meeting rail and bottom.
- Leaf weatherstrip on head parting stop

Insect Screens:

- Aluminum framed sliding full screen with charcoal fiberglass mesh screening available for double doors. Optional surround colors: Dark Bronze, Tan or Green. Optional mesh: charcoal aluminum or bright aluminum
- Optional wood swinging screen.

Glass:

- Double strength glass sealed with Gray Duraseal warm edge spacer. Standard overall glass thickness on wood exterior units is 5/8" with wood exterior glazing bead.
- Glazing method: silicone wet seal interior and exterior
- Glazing types: single glass, insulating glass
- Option for black Duraseal warm edge spacer
- Standard insulating glass options include: (see NFRC ratings for performance comparison)
 - 5/8" regular insulating glass
 - 5/8" Low E with Argon gas fill
 - 5/8" Low E with Krypton gas fill
- Other glass options: tempered, laminated, obscure, mouth blown restoration (wavy), tinted, UL rated, any specified

Optional Divided Lites:

- Options include: 5/8" white flat airspace grille, 5/8" white profiled airspace grille, 7/8" removable stick grille (interior only), 7/8" removable full surround grille (interior only), 5/8" true divided lite (single glass only), 5/8" simulated divided lite (SDL) with or without spacer bar, 7/8" SDL with our without a spacer and 1 1/4" SDL with our without a spacer bar. Gray SDL spacer is standard with gray SDL tape. Optional black spacer and tape is used when black glass spacer option is chosen.
- See "section details: divided lites for muntin profiles" for standard cuts. Custom configurations are available



Green Mountain Window and Door Co.

NFRC Values, Energy Star Rating Information and DP Ratings

Product Description* Default Frame	GMD2PSS		GMD1PSS		GMDFLSS	
	U-Factor	SHGC	U-Factor	SHGC	U-Factor	SHGC
2/S4/.20(2)/AIR/.375	.41	.24	.40	.28	.40	.33
Wood Stile & Door	U-Factor = .41, SHGC = .07					

A note on comparing NFRC ratings: the above ratings are based on NFRC 100-97 & 200 test standards. The new 2004 NFRC test procedure typically yield better energy ratings for the same window. Many window companies have already retested their windows and are publishing the new better rating. Green Mountain Window will be retesting this product in the spring of 2004. Please contact your Green Mountain Window Representative for updates.

* Number of glazing layers / spacer type / Low-E emissivity (surface) / gap fill / gap width
Solar Heat Gain Coefficient (SHGC)

Design Pressure Values are not available at this time; contact your Green Mountain Door dealer for more information.



Green Mountain Window and Door Co.

Measurement Conversions

“Size” given is in the format of feet and inches, therefore a 3068 is 3’ 0” wide and 6’ 8” tall.

Inswing Patio Door:

	<u>Width</u>	<u>Height</u>
For Frame Size:	“Size” + 1 1/2”	“Size” + 2 1/4”
For Rough Opening:	“Size” + 2 1/2”	“Size” + 2 3/4”

For Double Panel/Dual Operating Units:

For Frame Size:	“Size” + 2 1/4”	“Size” + 2 1/4”
For Rough Opening:	“Size” + 3 1/4”	“Size” + 3 1/4”

For Units with Transoms:

For Frame Size:	No Conversion Necessary	“Size” + 16”
For Rough Opening:	No Conversion Necessary	“Size” + 16 3/8”

For Units with Sidelites and /or Stud Pockets:

For Frame Size Width:	Frame of Door + Frame of Sidelite + Stud Pocket
For Rough Opening Width:	Formula Above + 1”

Swing Doors

	GMDTRIV 1214	GMDTRIV 2614	GMDTRIV 2814	GMDTRIV 3014	GMDTR2W 5014	GMDTR2W 6014	GMDTR2W 5014	GMDTR2W 6014
Rough Opening Frame	1' 4 3/8" 1' 4 3/4"	2' 8 1/2" 2' 7 1/2"	2' 10 1/2" 2' 9 1/2"	3' 2 1/2" 3' 1 1/2"	5' 3 1/4" 5' 2 1/4"	6' 3 1/4" 6' 2 1/4"	5' 3 1/4" 5' 2 1/4"	6' 3 1/4" 6' 2 1/4"
6' 10 3/4" 6' 10 1/4"	GMDFLSL 1268 D	GMDFLSS 2668 D, XL, or XR	GMDFLSS 2868 D, XL or XR	GMDFLSS 3068 D, XL or XR	GMDFLSS 5068 DD, DXL or XDR	GMDFLSS 6068 DD, DXL or XDR	GMDFLDS 5068 DD, XXL or XXR	GMDFLDS 6068 DD, XXL or XXR
6' 10 3/4" 6' 10 1/4"	GMDIPSL 1268 D	GMDIPSS 2868 D, XL or XR	GMDIPSS 3068 D, XL or XR					
6' 10 3/4" 6' 10 1/4"	GMDPSSL 1268 D	GMDPSS 2668 D, XL, or XR	GMDPSS 2868 D, XL or XR	GMDPSS 3068 D, XL or XR				
6' 10 3/4" 6' 10 1/4"								
		GMD6PSS 2868 D, XL or XR	GMD6PSS 3068 D, XL or XR					

Interior

Exterior

French Sliding Doors

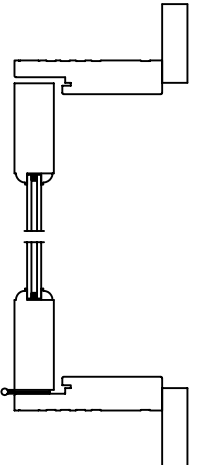
	GMDSLTRIV 2614	GMDSLTRIV 3014	GMDSLTRIV 5014	GMDSLTRIV 5014	GMDSLTRIV 6014	GMDSLTRIV 6014
Rough Opening Frame	2' 7 1/4" 2' 6 1/4"	3' 1 1/4" 3' 1/4"	4' 11 3/4" 4' 10 3/4"	4' 11 3/4" 4' 10 3/4"	5' 11 5/8" 5' 10 5/8"	5' 11 5/8" 5' 10 5/8"
6' 10 3/4" 6' 10 1/4"	GMDSL 2666 D	GMDSL 3066 D	GMDSL 5066 DX	GMDSL 5066 XD	GMDSL 6066 DX	GMDSL 6066 XD

All elevations shown are from the exterior view.

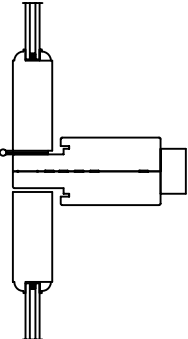
Note: Standard divided light patterns shown, others available upon request.



Vertical Cross Section



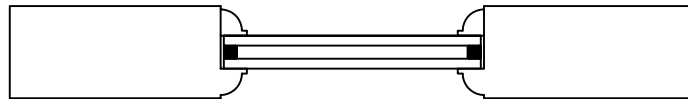
Horizontal Cross Section



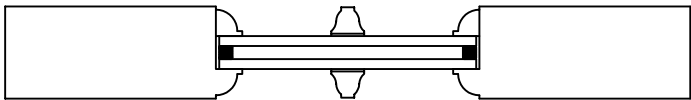
Mullion Detail

Cross Sectional View of Inswing Doors

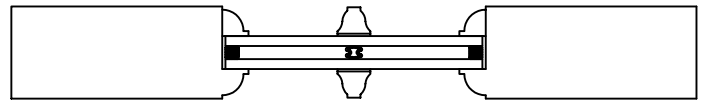
Green Mountain Window
92 Park Street, Rutland, Vermont



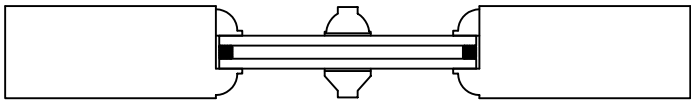
No Divided Lites



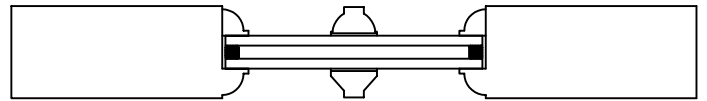
5/8" SDL



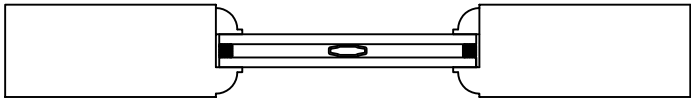
5/8" SDL with Spacer Bar



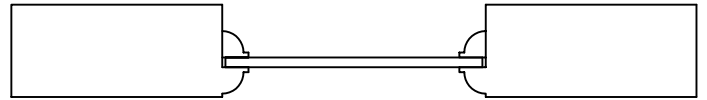
7/8" SDL



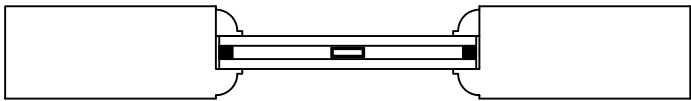
7/8" SDL with Spacer Bar



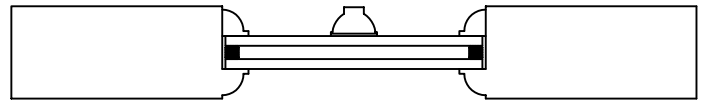
Profile Airspace



No Lites, Single Glass



Flat Airspace



7/8" Grille

Swing Doors

	GMDTRIV 1214	GMDTRIV 2614	GMDTRIV 2814	GMDTRIV 3014	GMDTR2W 5014 GMDTRIV 5014	GMDTR2W 6014 GMDTR2W 6014	GMDTR2W 5014 GMDTRIV 5014	GMDTR2W 6014 GMDTR2W 6014
Rough Opening Frame	1' 4 3/8" 1' 4 3/4"	2' 8 1/2" 2' 7 1/2"	2' 10 1/2" 2' 9 1/2"	3' 2 1/2" 3' 1 1/2"	5' 3 1/4" 5' 2 1/4"	6' 3 1/4" 6' 2 1/4"	5' 3 1/4" 5' 2 1/4"	6' 3 1/4" 6' 2 1/4"
6' 10 3/4" 6' 10 1/4"	GMDFLSL 1268 D	GMDFLSS 2668 D, XL, or XR	GMDFLSS 2868 D, XL or XR	GMDFLSS 3068 D, XL or XR	GMDFLSS 5068 DD, DXL or XDR	GMDFLSS 6068 DD, DXL or XDR	GMDFLDS 5068 DD, XXL or XXR	GMDFLDS 6068 DD, XXL or XXR
6' 10 3/4" 6' 10 1/4"	GMDIPSL 1268 D	GMDIPSS 2868 D, XL or XR	GMDIPSS 3068 D, XL or XR					
6' 10 3/4" 6' 10 1/4"	GMDPSSL 1268 D	GMDPSS 2668 D, XL, or XR	GMDPSS 2868 D, XL or XR	GMDPSS 3068 D, XL or XR				
6' 10 3/4" 6' 10 1/4"		GMD6PSS 2868 D, XL or XR	GMD6PSS 3068 D, XL or XR					

Interior

Exterior

French Sliding Doors

	GMDSLTRIV 2614	GMDSLTRIV 3014	GMDSLTRIV 5014	GMDSLTRIV 5014	GMDSLTRIV 6014	GMDSLTRIV 6014
Rough Opening Frame	2' 7 1/4" 2' 6 1/4"	3' 1 1/4" 3' 1/4"	4' 11 3/4" 4' 10 3/4"	4' 11 3/4" 4' 10 3/4"	5' 11 5/8" 5' 10 5/8"	5' 11 5/8" 5' 10 5/8"
6' 10 3/4" 6' 10 1/4"	GMDSL 2666 D	GMDSL 3066 D	GMDSL 5066 DX	GMDSL 5066 XD	GMDSL 6066 DX	GMDSL 6066 XD

All elevations shown are from the exterior view.

Note: Standard divided light patterns shown, others available upon request.

Swing Doors

	16 3/8" 16"									
Rough Opening Frame	16" 15 7/16"	32" 31 7/16"	34" 33 7/16"	38" 37 7/16"	63" 62 1/2"	75" 74 1/2"	63" 62 1/4"		75" 74 1/4"	
	83" 82 5/8"									
	83" 82 5/8"									
	83" 82 5/8"									
	83" 82 5/8"									

Interior

Exterior

French Sliding Doors

	16 3/8" 16"					
Rough Opening Frame	32 3/8" 31 3/4"	38 3/8" 37 3/4"	58 1/2" 57 7/8"	58 1/2" 57 7/8"	71 1/2" 70 7/8"	71 1/2" 70 7/8"
	80 1/2" 80 1/16"					

All elevations shown are from the exterior view.

Note: Standard divided light patterns shown, others available upon request.