



GREEN MOUNTAIN WINDOW MEASURING INSTRUCTIONS FOR INSERT WINDOWS

IMPORTANT: These instructions are for the most common insert window installation technique. Other techniques can be used but are not covered in these instructions. It is important to keep in mind exactly how the window will be installed when measuring. If you are measuring for quoting purposes exact dimensions are not required. However, only the person doing the installation should measure for ordering purposes since existing conditions or intended installation method can effect desired window size.

#1. EXISTING OPENING WIDTH: Measure the inside of the frame opening width (jamb to jamb) in at least three locations: top, bottom and middle. Record the narrowest result as dimension “A”. The typical deduct for insert frame size is 3/8”. If there is a reason to use a different frame dimension (such as the frame being out of square) determine the exact frame size you would like and note that dimension “A” is desired frame size.

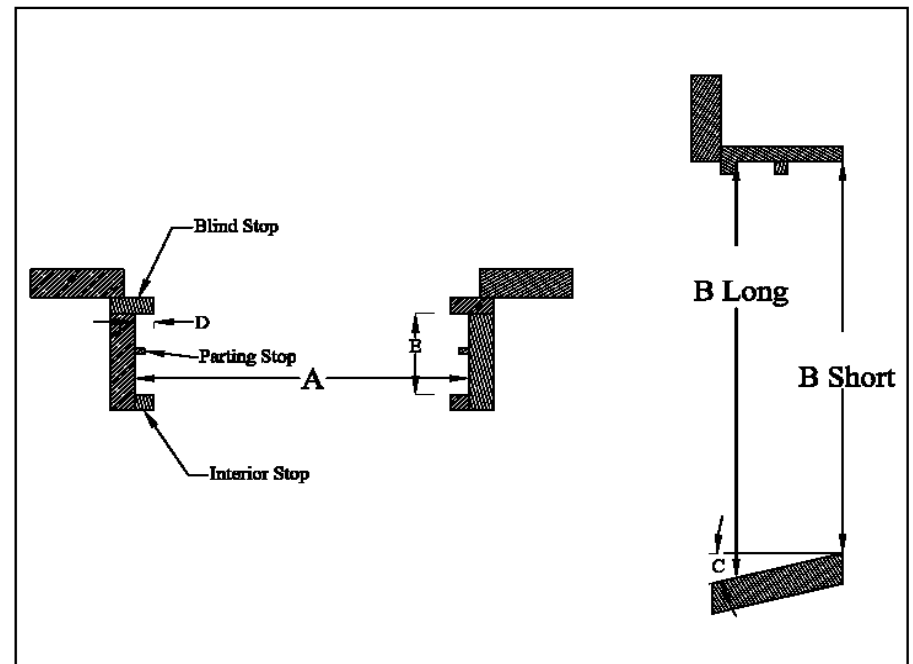
#2. EXISTING OPENING HEIGHT – SHORT POINT: Measure the inside of the frame opening height (top of sill to head jamb) in at least three locations: left side, right side and center. Record the smallest result as dimension “B - Short”. Note that this measurement is taken from the actual window sill not the window stool. The typical height deduct for insert frame size is 1/4”. If there is a reason to use a different frame dimension (such as the frame being out of square) determine the exact frame size you would like.

#3. EXISTING OPENING HEIGHT – LONG POINT: Measure the outside of the frame opening height (from head jamb to sill along the inside edge of the blind stop) on each side. Record the smaller result as dimension “B - Long”. Note that this measurement is taken along the edge of the blind stop that faces the inside of the house.

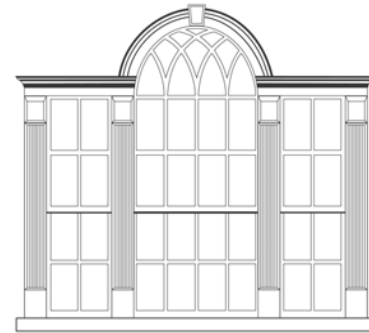
#4. DETERMINE THE SILL ANGLE: Check the sill angle “C” and record the angle to the nearest degree. A 14 degree angle is the standard for our insert window.

#5. DETERMINE THE WIDTH OF THE EXTERIOR BLIND STOP: You do not need to supply this number to order your windows. However, if this dimension “D” is less than 3/8” on the sides and head you may need to add more wood to it in order for your new window to have a surface to rest against.

#6. DETERMINE THE POCKET DIMENSION: You do not need to supply this number to order your windows. However, this dimension “E” must be at least 3 3/8” for your new windows to fit. If the dimension is less than 3 3/8” the existing frame will need to be altered. This may be as simple as just moving the interior stops inward. But, if a window stool exists it may need to be removed or altered to get 3 3/8”



Note on window stools: To properly hide the bottom sash weatherstripping of the insert window the stool height must be at least 7/8” off the sill. If the existing stool is less than 7/8” a quarterround or other profile trim piece can be added to the top of the stool after installation.



**GREEN MOUNTAIN WINDOW
MEASURING INSTRUCTIONS FOR
INSERT DOUBLE HUNG**

Green Mountain Window reserves the right to make changes in product and specifications at any time without notice. Not responsible for typographical errors.

GREEN MOUNTAIN WINDOW, MEASURING INSTRUCTIONS FOR INSERT UNITS, JAN 1 2008

GREEN MOUNTAIN WINDOW, 92 PARK ST, RUTLAND, VT 05701

INSERT MEASURING

